

S 17

Truck-Mounted concrete pump  
with 3-section placing boom



# SPECIFICATIONS

## Pump Kit on S 17

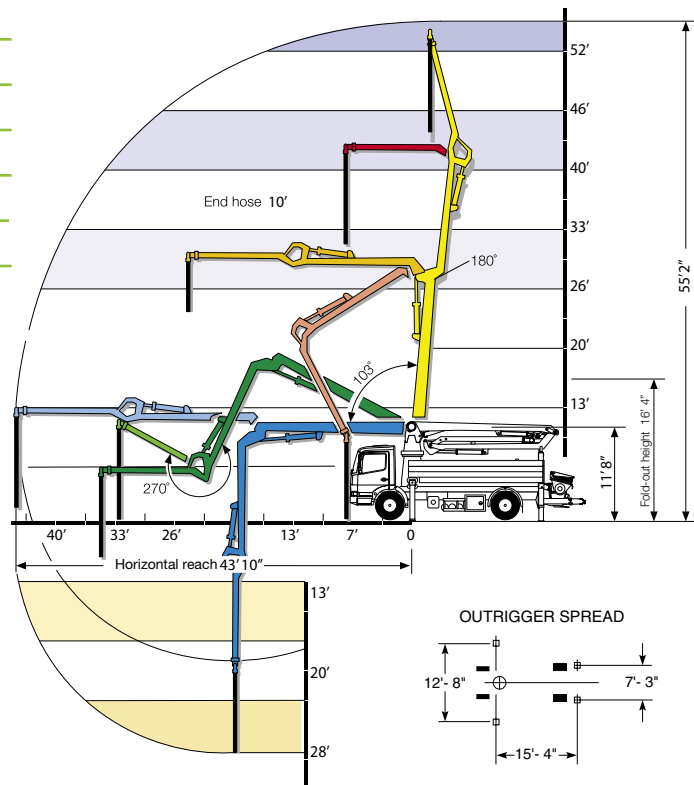
## 2023-3 110/75 SC

	U.S.	Metric
Theor. Concrete Output Per Hour (cubic yards - cubic meters)	124	95
Maximum Pressure on Concrete (psi - bar)	1095	76
Maximum Strokes Per Minute	19	19
Pump Cylinder Diameter (in. - mm)	9	230
Pump Cylinder Stroke Length (in. - mm)	79	2000
Differential Cylinder Size (in. - mm)	4.3	110
Maximum Aggregate Size (in. - mm)	2.5	63.5

## Boom Specifications

	U.S.	Metric
Pipeline Diameter (in. - mm)	5	125
Vertical Reach (ft.-in. - m)	55-2	16.8
Horizontal Reach (ft.-in. - m)	43-10	13.5
Net Horizontal Reach (ft.-in. - m)	36-10	11.2
Unfolding Height (ft.-in. - m)	16-4	5
Section Lengths		
First Section (ft.-in. - m)	16-8	5.1
Second Section (ft.-in. - m)	14-9	4.5
Third Section (ft.-in. - m)	11-11	3.6
Slewing Range (degrees)	370°	370°
End hose length (ft. - m)	10	3

Specifications are subject to change without prior notice.



1/09 - 1M

